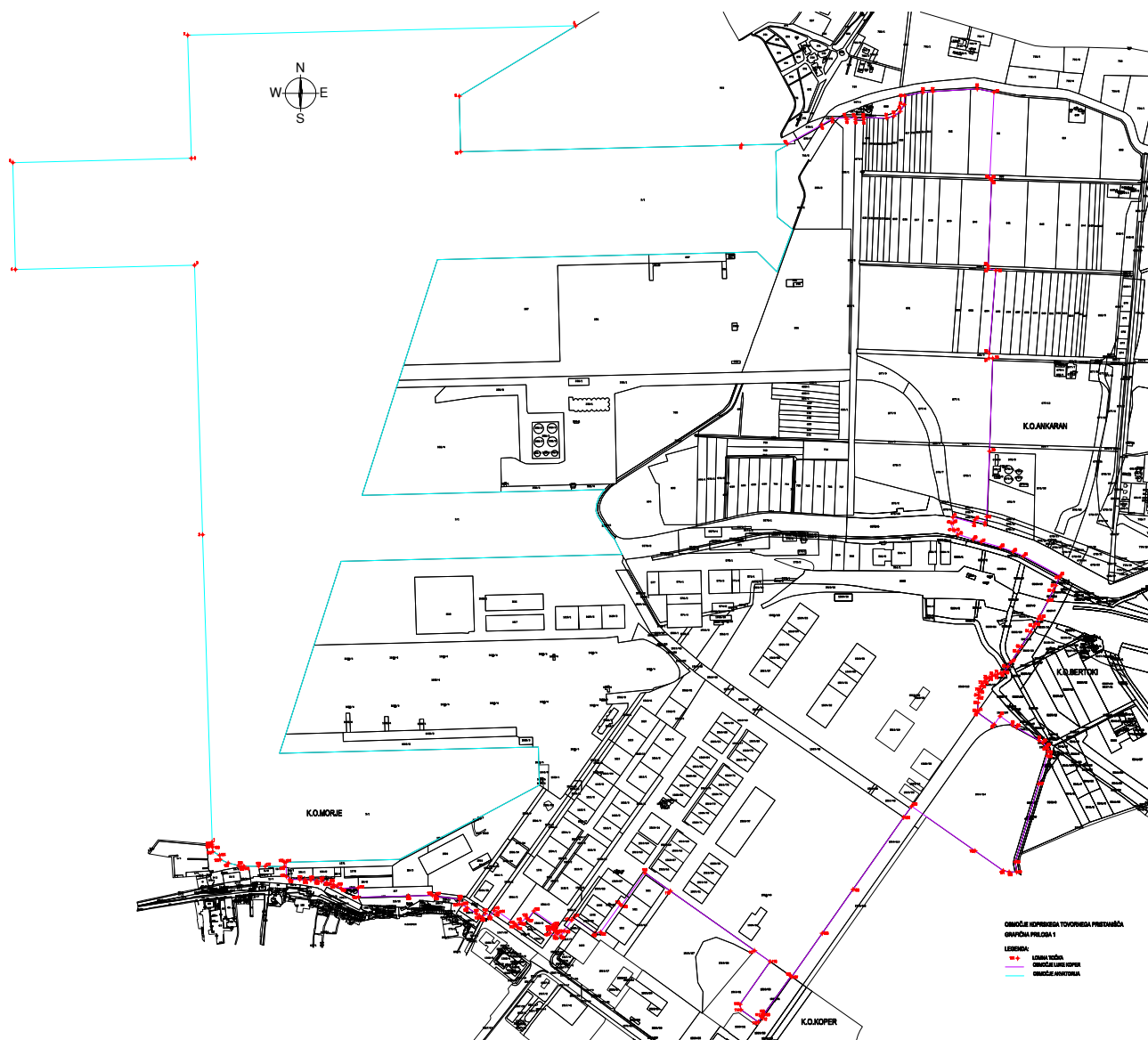


PRILOGA 1



**KOORDINATE OBMOČJA KOPRSKEGA TOVORNEGA PRISTANIŠČA
IZ GRAFIČNE PRILOGE 1**

ŠT. TOČKE	Y	X
1	401.037,23	45.955,49
2	401.012,50	46.756,50
3	400.991,53	47.459,08
4	400.524,56	47.448,11
5	400.517,83	47.726,73
6	400.983,21	47.737,96
7	400.973,63	48.058,93
8	401.985,03	48.083,29
9	401.681,70	47.899,86
10	401.685,20	47.754,90
11	402.417,28	47.772,57
12	402.536,79	47.775,46
13	402.626,59	47.825,62
14	402.654,36	47.841,18
15	402.689,75	47.843,75
16	402.692,05	47.839,54
17	402.714,42	47.845,48
18	402.714,67	47.839,50
19	402.735,86	47.838,95
20	402.735,89	47.844,39
21	402.795,81	47.842,81
22	402.814,75	47.848,24
23	402.831,01	47.860,18
24	402.841,40	47.877,73
25	402.842,59	47.900,89
26	402.890,12	47.909,89
27	402.916,23	47.911,80
28	403.031,77	47.918,78
29	403.075,58	47.910,42
30	403.064,77	47.685,32
31	403.069,59	47.685,17

ŠT. TOČKE	Y	X
32	403.069,49	47.680,49
33	403.060,57	47.457,23
34	403.060,33	47.450,80
35	403.080,38	47.445,61
36	403.063,10	47.228,90
37	403.062,35	47.216,89
38	403.072,20	47.216,39
39	403.064,04	46.974,03
40	403.056,55	46.803,81
41	403.052,17	46.788,29
42	403.025,75	46.795,02
43	403.023,55	46.787,15
44	402.968,69	46.802,23
45	402.969,00	46.786,89
46	402.964,06	46.787,70
47	402.968,70	46.769,13
48	402.972,66	46.768,18
49	402.981,58	46.757,25
50	403.021,60	46.744,48
51	403.042,48	46.738,00
52	403.092,66	46.724,28
53	403.125,54	46.712,43
54	403.152,39	46.700,75
55	403.248,74	46.648,71
56	403.246,62	46.645,30
57	403.236,20	46.623,65
58	403.230,29	46.611,30
59	403.216,49	46.584,39
60	403.195,17	46.544,63
61	403.190,86	46.537,26
62	403.183,30	46.524,07

ŠT. TOČKE	Y	X
63	403.179,08	46.516,72
64	403.170,80	46.502,87
65	403.147,35	46.465,39
66	403.138,53	46.451,90
67	403.119,54	46.423,94
68	403.111,38	46.412,45
69	403.101,68	46.398,82
70	403.093,00	46.395,78
71	403.085,38	46.393,12
72	403.077,83	46.390,48
73	403.070,29	46.387,80
74	403.063,10	46.384,31
75	403.056,49	46.379,81
76	403.050,62	46.374,39
77	403.045,60	46.368,17
78	403.041,54	46.361,28
79	403.038,54	46.353,87
80	403.036,66	46.346,10
81	403.035,81	46.338,14
82	403.035,13	46.330,17
83	403.034,11	46.318,22
84	403.032,41	46.298,29
85	403.032,19	46.295,80
86	403.032,27	46.292,97
87	403.076,05	46.261,64
88	403.091,25	46.283,29
89	403.124,07	46.260,07
90	403.134,27	46.254,14
91	403.193,06	46.219,96
92	403.202,76	46.214,33
93	403.212,46	46.203,70
94	403.215,22	46.198,81
95	403.216,09	46.190,43

ŠT. TOČKE	Y	X
96	403.214,61	46.179,86
97	403.192,58	46.107,06
98	403.131,01	45.903,16
99	403.134,86	45.876,99
100	403.115,16	45.877,17
101	403.099,56	45.880,52
102	403.026,21	45.932,45
103	402.860,61	46.048,59
104	402.840,09	46.019,37
105	402.708,04	45.831,44
106	402.627,76	45.717,18
107	402.548,09	45.603,80
108	402.546,49	45.604,93
109	402.475,40	45.505,47
110	402.472,70	45.507,28
111	402.468,03	45.500,63
112	402.470,66	45.498,83
113	402.461,31	45.485,75
114	402.416,03	45.517,78
115	402.413,59	45.531,73
116	402.492,09	45.643,44
117	402.451,43	45.672,16
118	402.231,84	45.827,44
119	402.165,29	45.875,13
120	402.104,93	45.789,96
121	402.101,37	45.792,47
122	402.050,19	45.720,09
123	402.035,69	45.718,09
124	401.979,15	45.757,85
125	401.974,40	45.751,00
126	401.954,62	45.723,08
127	401.947,01	45.710,54
128	401.938,01	45.716,92

ŠT. TOČKE	Y	X
129	401.935,62	45.718,38
130	401.930,54	45.710,06
131	401.917,85	45.717,65
132	401.925,24	45.729,88
133	401.922,57	45.731,29
134	401.924,10	45.734,67
135	401.926,63	45.739,37
136	401.875,81	45.775,17
137	401.860,88	45.754,14
138	401.857,12	45.756,98
139	401.840,41	45.745,81
140	401.840,12	45.745,97
141	401.831,90	45.734,28
142	401.826,25	45.738,22
143	401.828,40	45.740,97
144	401.785,12	45.771,75
145	401.780,30	45.770,94
146	401.772,38	45.776,58
147	401.761,50	45.760,82
148	401.749,45	45.769,53
149	401.741,85	45.757,94
150	401.734,34	45.763,02
151	401.726,09	45.768,43
152	401.702,26	45.784,09
153	401.689,26	45.792,29
154	401.681,59	45.793,42
155	401.682,42	45.806,19
156	401.618,33	45.814,07
157	401.618,27	45.815,32
158	401.611,80	45.816,33

ŠT. TOČKE	Y	X
159	401.548,47	45.814,69
160	401.418,72	45.811,33
161	401.418,06	45.835,80
162	401.373,18	45.834,74
163	401.362,66	45.840,20
164	401.354,06	45.844,17
165	401.345,19	45.847,53
166	401.336,03	45.849,89
167	401.322,16	45.852,89
168	401.310,42	45.854,52
169	401.294,41	45.856,06
170	401.280,07	45.856,79
171	401.265,86	45.857,46
172	401.240,05	45.857,58
173	401.230,85	45.865,12
174	401.229,99	45.902,49
175	401.225,81	45.902,35
176	401.225,98	45.891,13
177	401.175,92	45.891,87
178	401.158,69	45.891,92
179	401.120,20	45.892,26
180	401.113,55	45.890,95
181	401.106,03	45.893,97
182	401.079,24	45.900,51
183	401.058,61	45.909,48
184	401.056,84	45.920,51
185	401.038,91	45.929,91
186	401.038,12	45.941,69
187	401.036,32	45.945,38
188	401.036,69	45.949,28