

## Supplementary information

### Flow charts for coordination procedures and compatibility analysis

The flow charts are for information purposes only and do not form part of the Agreement

#### Contents

1. Explanatory note concerning flow charts for coordination procedures
2. Coordination Procedure A: Procedure for analogue television stations (Article 4 Part A)
3. Coordination Procedure B: Procedure for DVB-T stations or SFNs (Article 4 Part B)
4. Coordination procedure C: Procedure for stations of services other than broadcasting having primary status (Article 4 Part C)
5. Conversion of an analogue assignment into a DVB-T station or SFN (Annex 6)
6. Compatibility analysis A/C: DVB-T interfered with by analogue television and DVB-T interfered with by DVB-T (Annex 4 Section A and C)
7. Compatibility analysis B: Analogue TV interfered with by DVB-T (Annex 4 Section B)
8. Compatibility analysis D: Services other than broadcasting having primary status interfered with by DVB-T (Annex 4 Section D)
9. Compatibility analysis E: DVB-T interfered with by services other than broadcasting having primary status (Annex 4 Section E)
10. CEPT databases to be used in compatibility analysis

**1. Explanatory note concerning flow charts for coordination procedures**

The flow charts are for information only and do not form part of the Chester Agreement. To assist in the application of the Article 4 procedures flow charts have been developed for the coordination of:

Service to be coordinated	Coordination procedure	Flow chart
Analogue television	Art. 4 part A	A
DVB-T	Art. 4 part B	B
T-DAB	-	none
Other Service	Art. 4 part C	C

Furthermore there is a flow chart for the conversion procedure contained in Annex 6.

Part of the coordination procedure is a compatibility analysis in which the service to be coordinated is tested against all four services to be protected. The compatibility analyses, as far as appropriate, are shown in separate flow charts contained in this supplementary information.

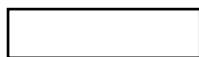
The matrix in Table S1 gives the numbering of the flow charts of the compatibility analyses. Eleven of the 16 possible combinations do not relate to the coordination of DVB-T assignments, these are either covered by the Stockholm Agreement, indicated as ST61, the Wiesbaden Arrangement indicated as WI95, or by the Radio Regulations indicated as RR.

The numbering of the flow charts is consistent with the section numbers of Annex 4.

**Table S1**  
**Numbering of flow charts for the compatibility analysis of DVB-T with other services**

Service to be protected	Service to be coordinated			
	Analogue television	DVB-T	T-DAB	Any other services
	Art. 4 part A	Art. 4 part B	-	Art. 4 part C
1. Analogue television	ST61	B	WI95	ST61
2. DVB-T including conversions	A	C	WI95 <sup>1</sup>	E
3. T-DAB	WI95	WI95 <sup>1</sup>	WI95	WI95
4. Any other services	ST61	D	WI95	RR

The shadings in the flow charts of coordination procedure A, B, and C have the following meaning:



Action by the administration requesting the new assignment or allotment.



Action by the administration consulted.

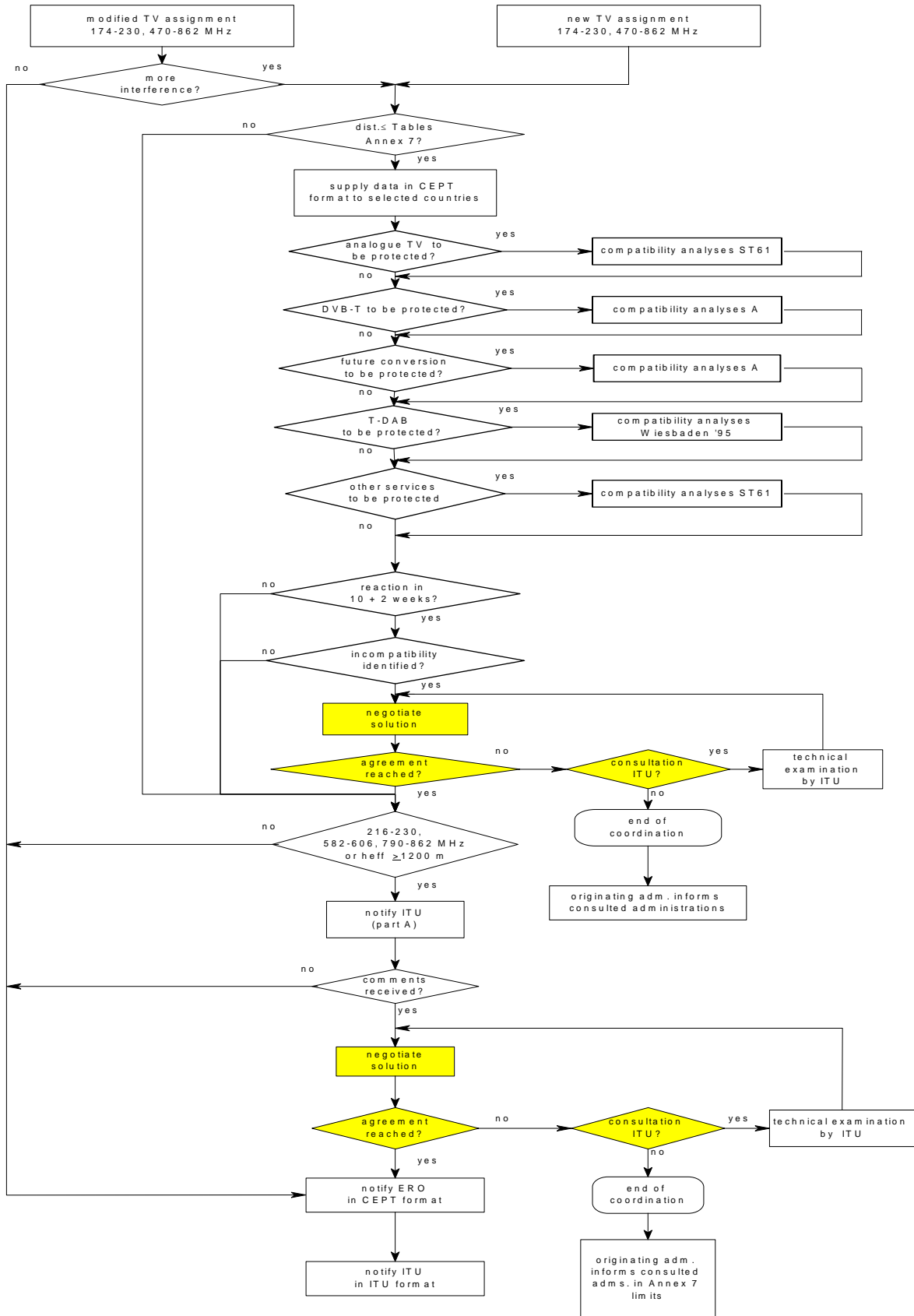


Common action of requesting and consulted administration.

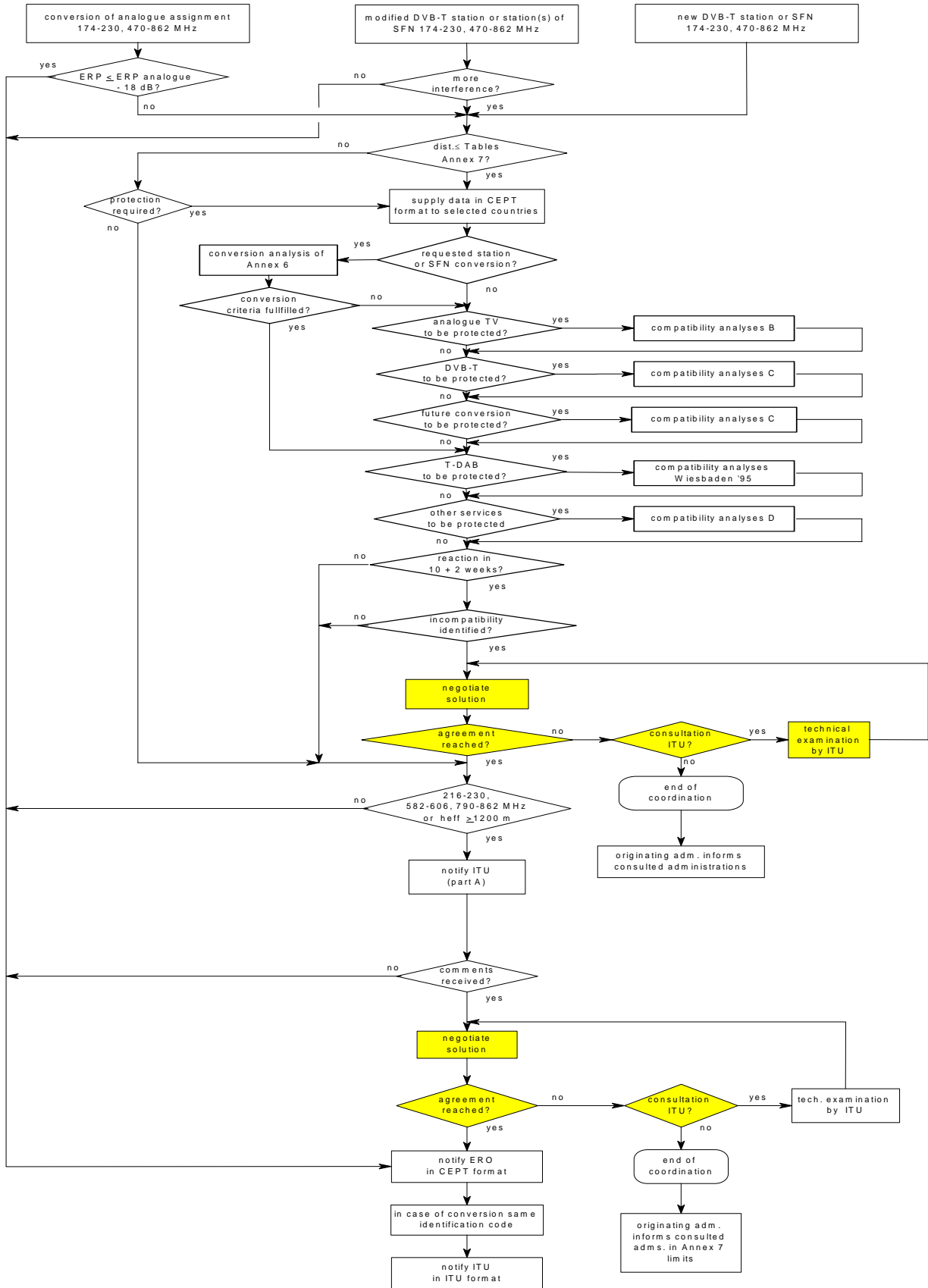
The flow charts A, B and C, the conversion flow chart and the compatibility analysis flow charts are given in this supplementary information.

<sup>1</sup> With appropriate protection criteria as specified in Annex 1.

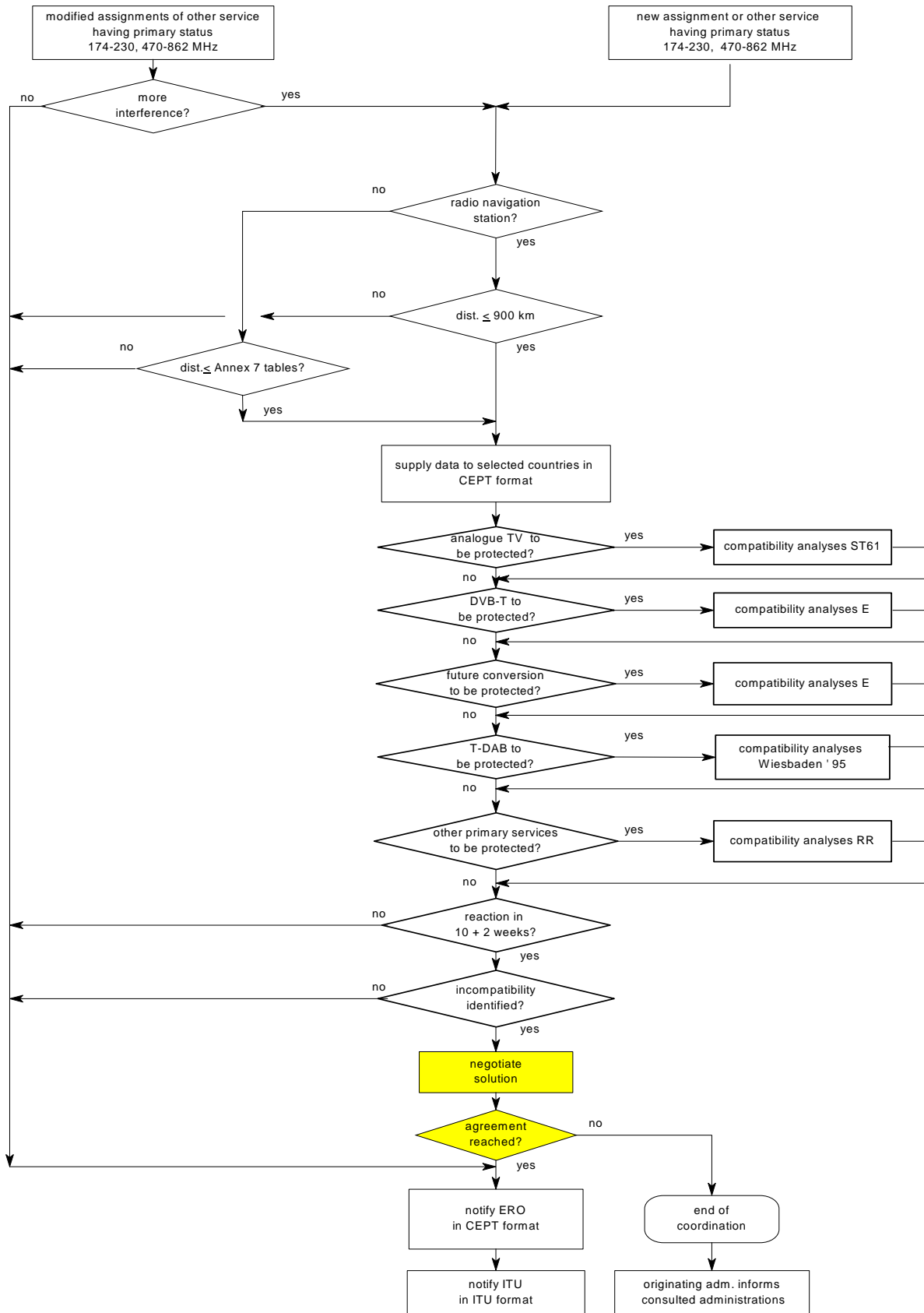
2. Coordination Procedure A: Procedure for analogue television stations (Article 4 Part A)



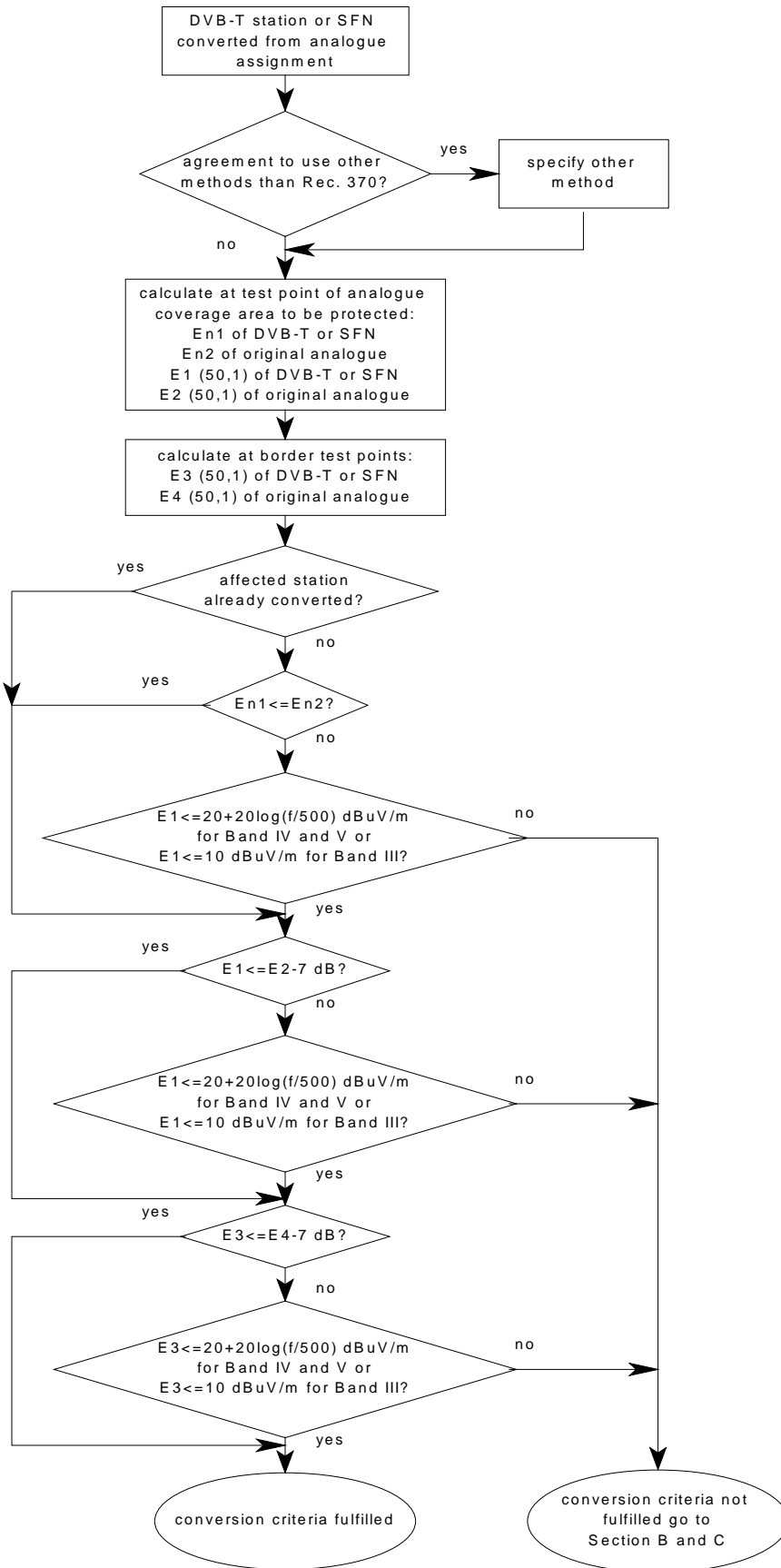
### 3. Coordination Procedure B: Procedure for DVB-T stations or SFNs (Article 4 Part B)



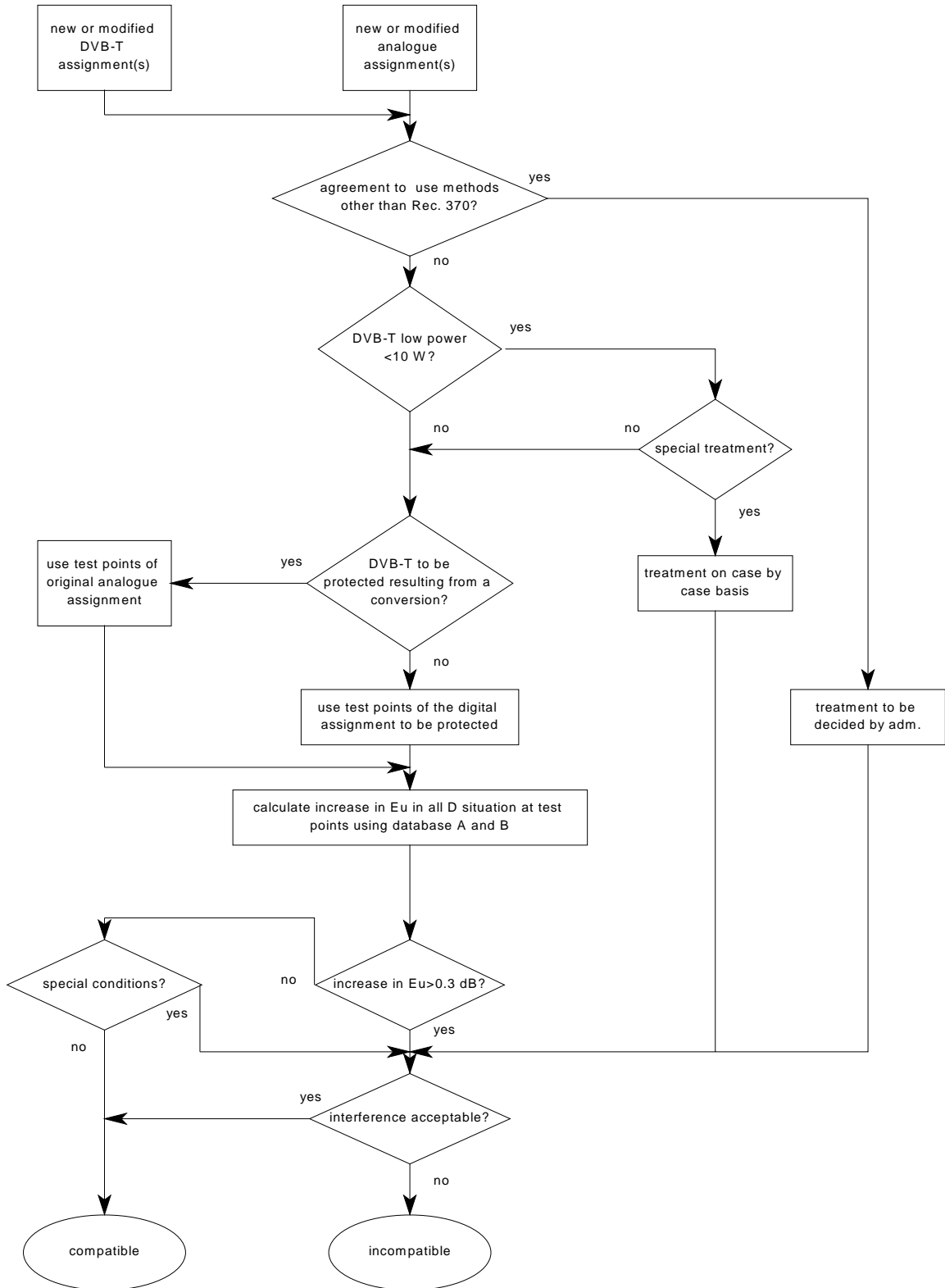
**4. Coordination procedure C: Procedure for stations of services other than broadcasting having primary status (Article 4 Part C)**



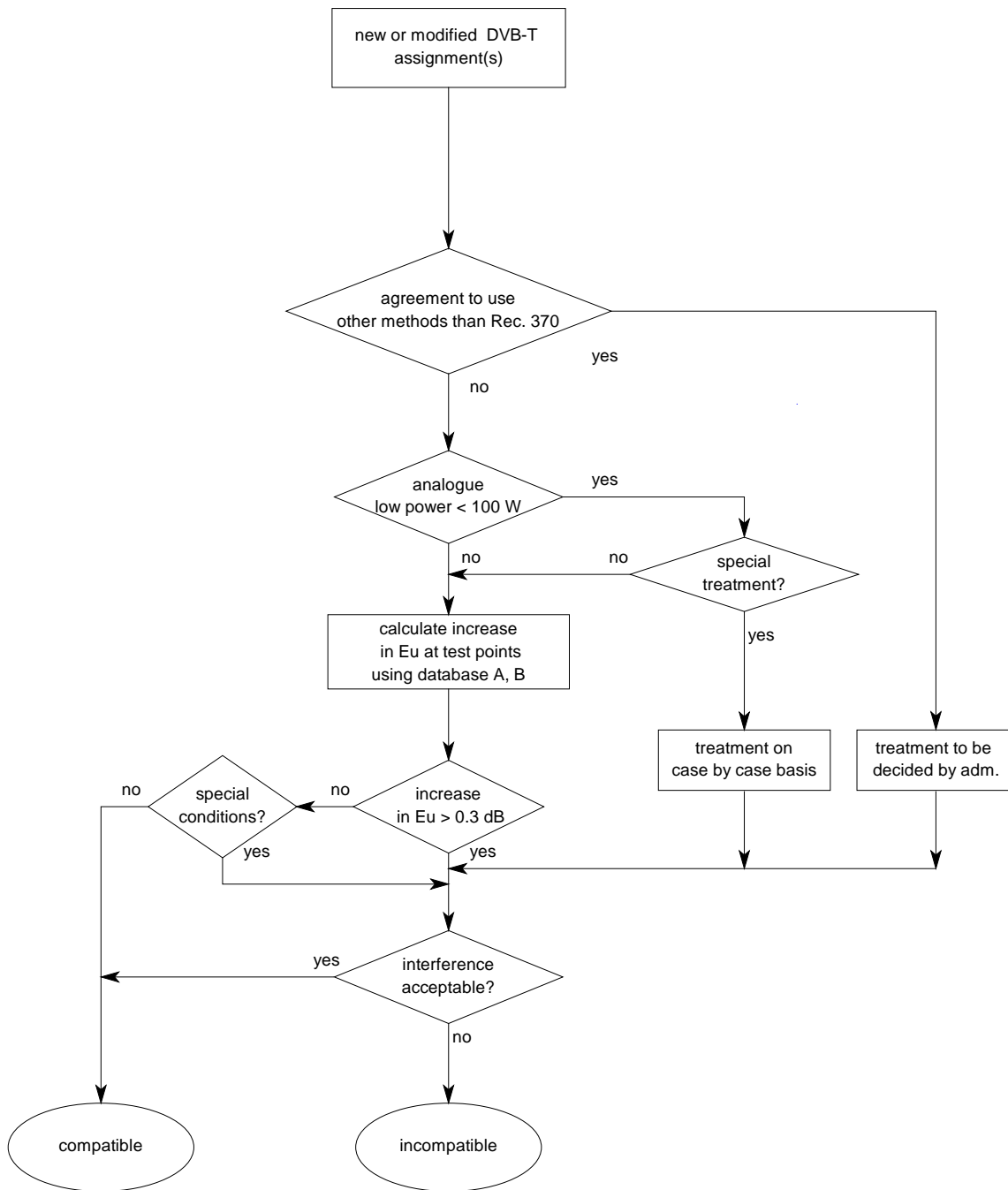
5. Conversion of an analogue assignment into a DVB-T station or SFN (Annex 6)



6. **Compatibility analysis A/C: DVB-T interfered with by analogue television and DVB-T interfered with by DVB-T (Annex 4 Section A and C)**

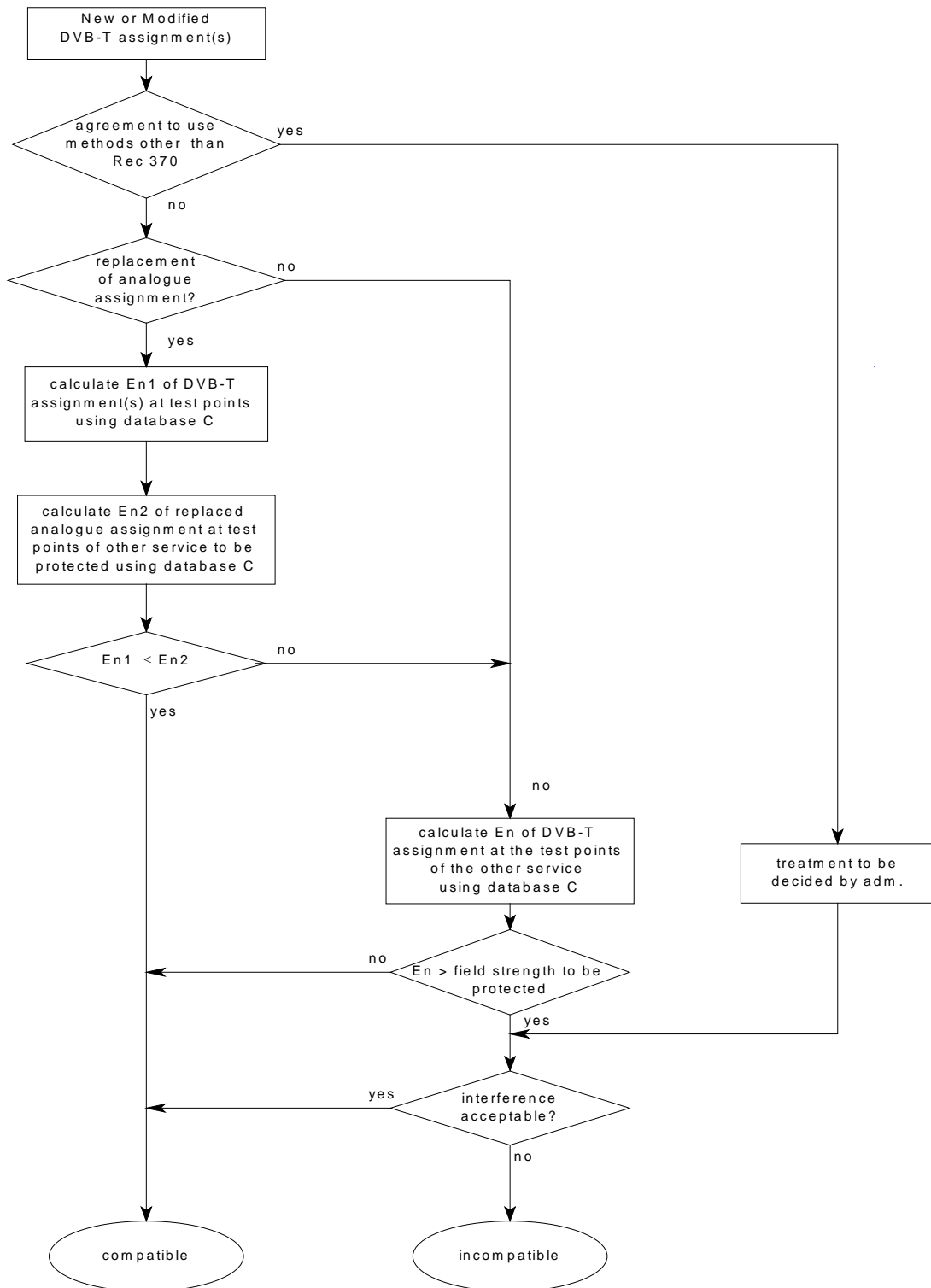


7. Compatibility analysis B: Analogue TV interfered with by DVB-T (Annex 4 Section B)

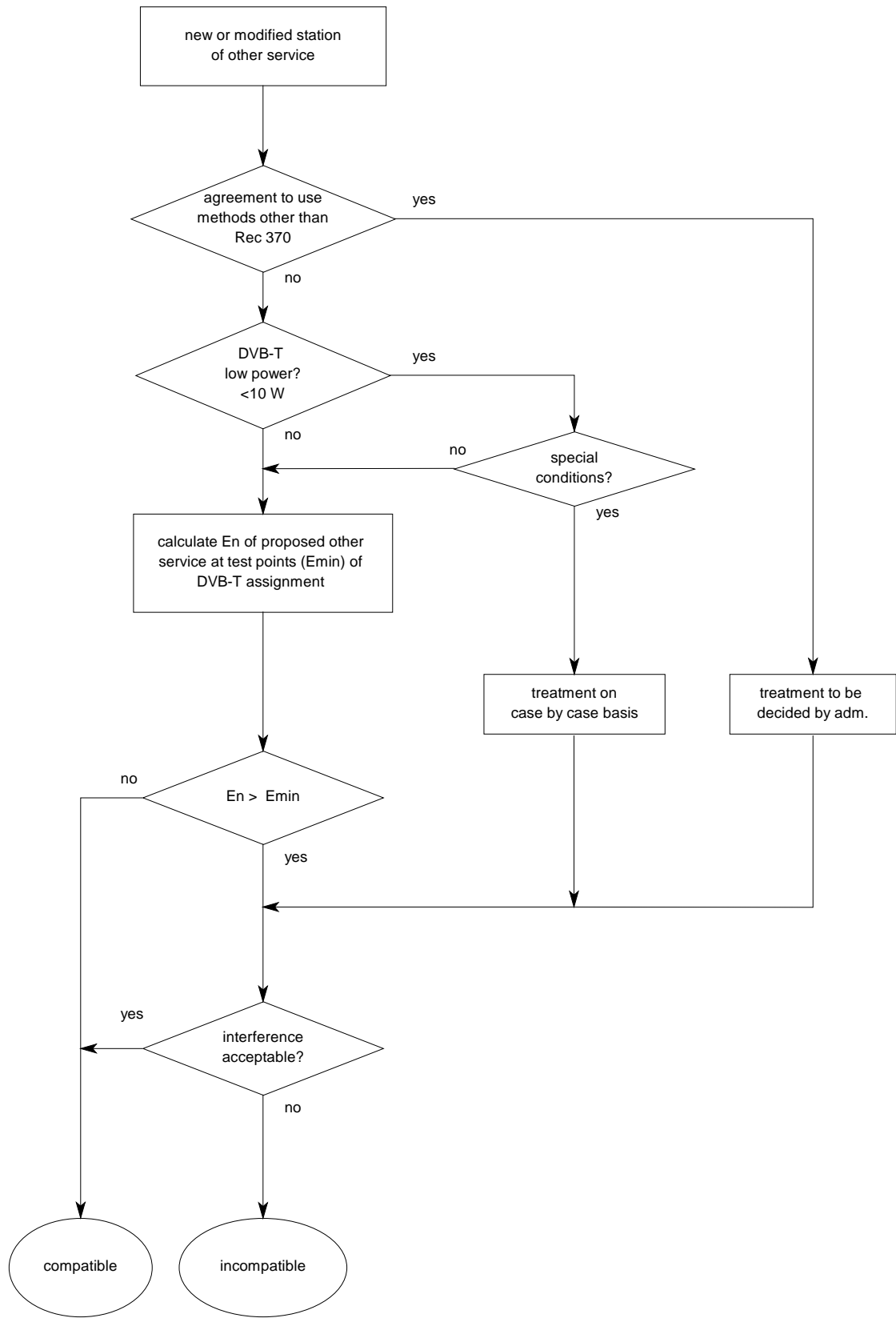




8. **Compatibility analysis D: Services other than broadcasting having primary status interfered with by DVB-T (Annex 4 Section D)**



9. Compatibility analysis E: DVB-T interfered with by services other than broadcasting having primary status (Annex 4 Section E)



10. CEPT databases to be used in compatibility analysis

