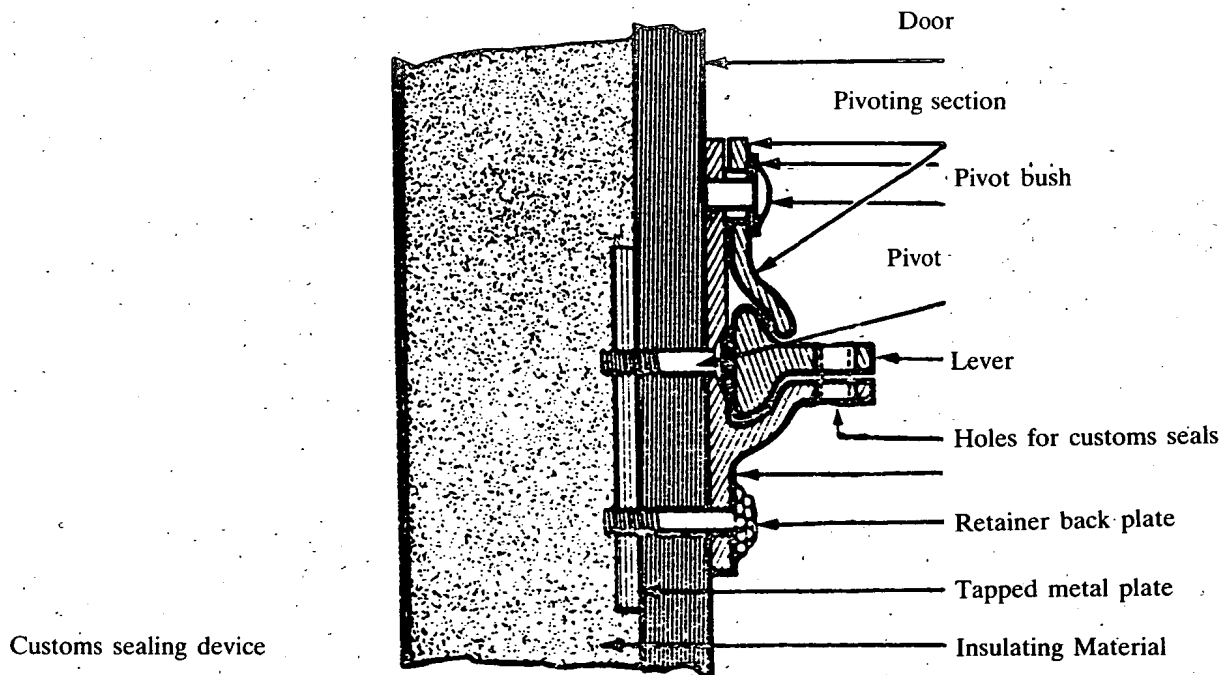
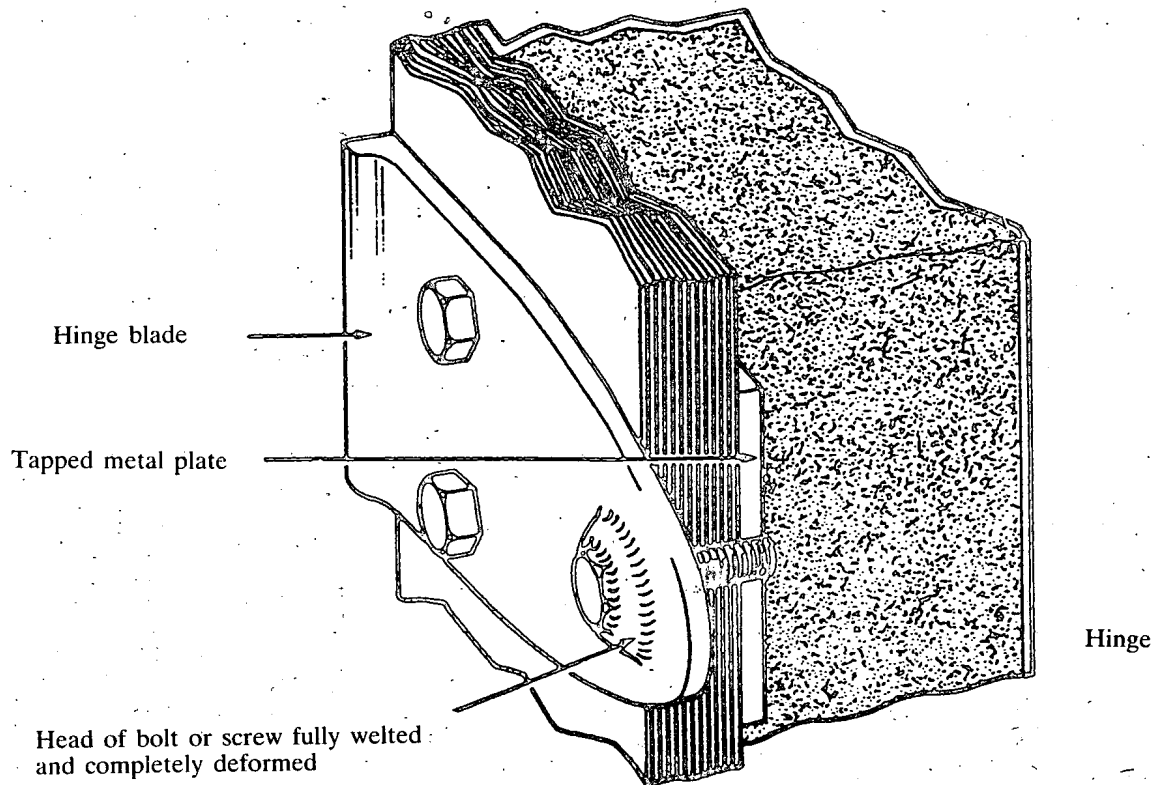
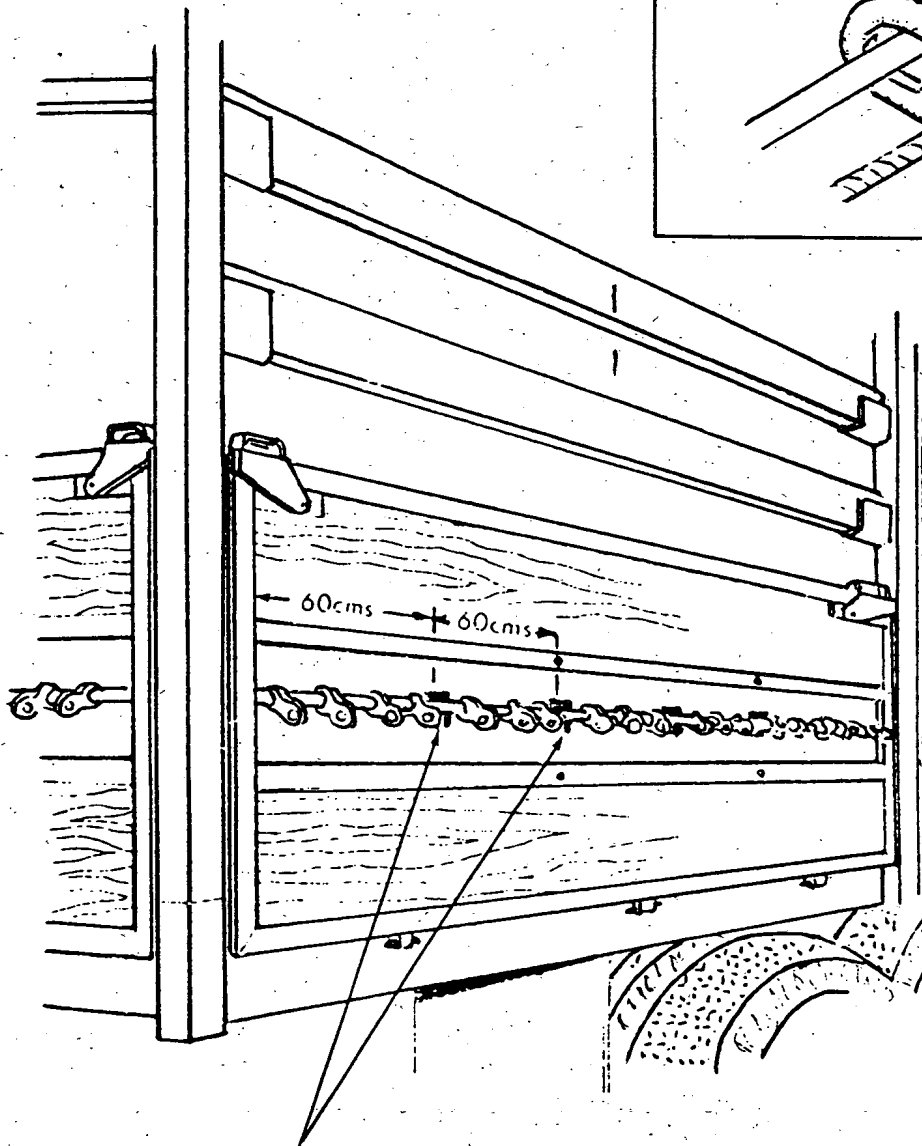
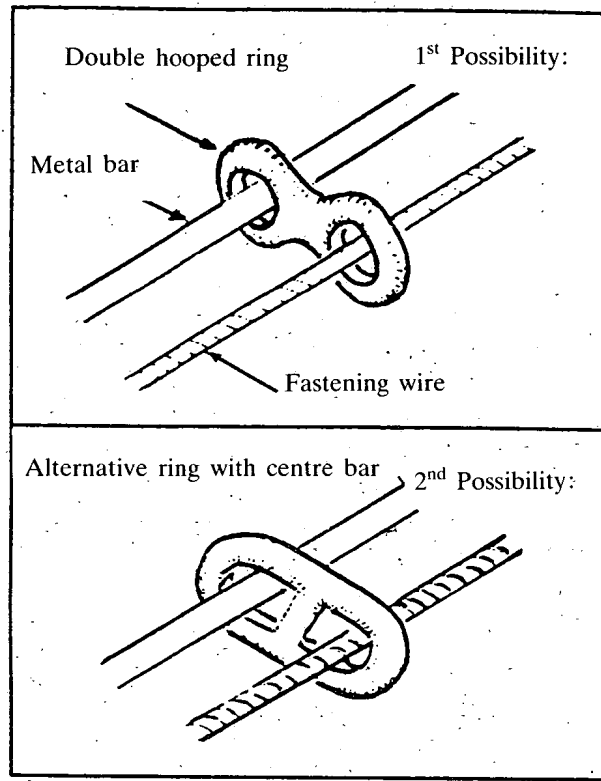


Sketch No. 1
 Example of hinge and customs sealing device on doors
 of vehicles having insulated load compartments



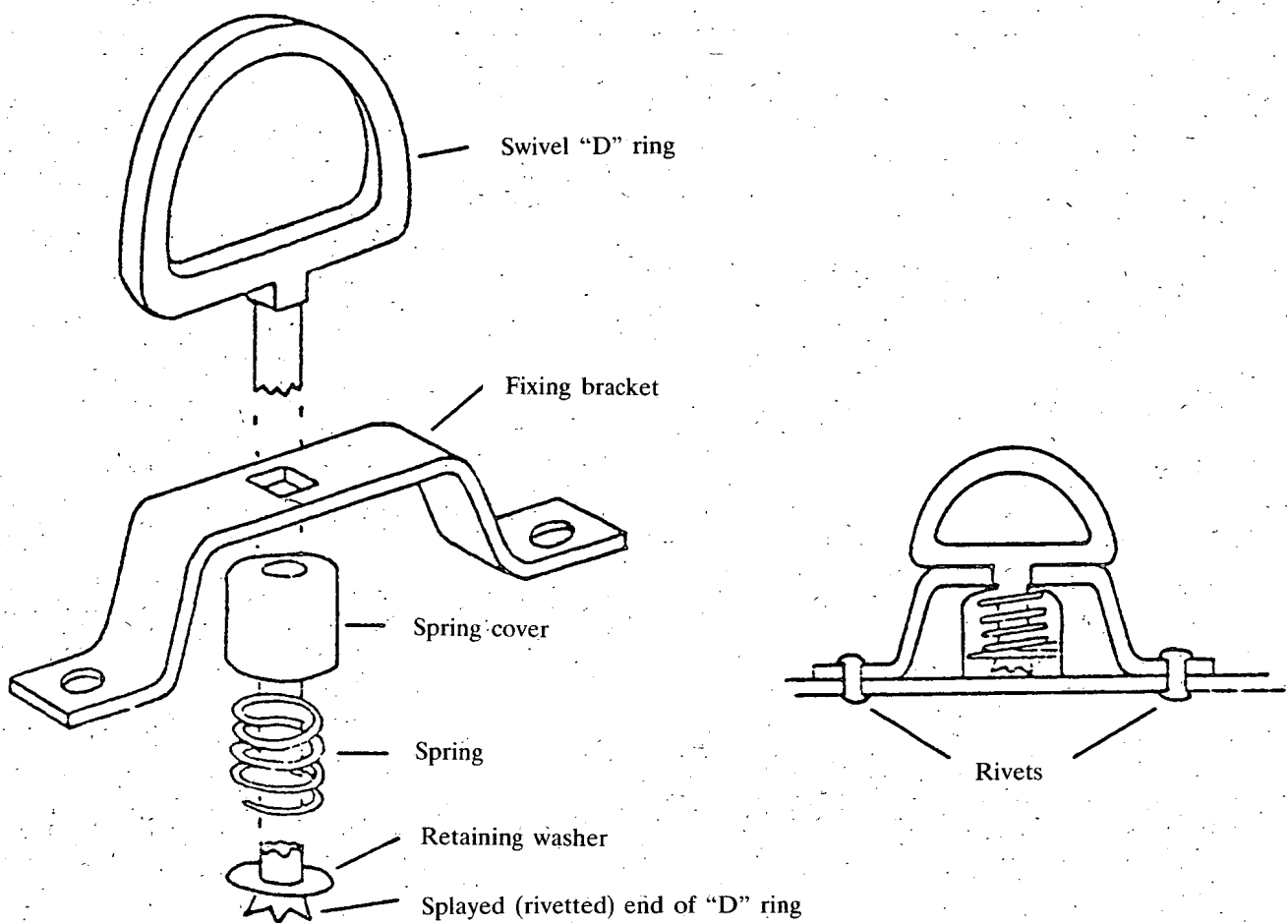
- (1) Set-screw head completely deformed by welding. Not accessible when door sealed
- (2) Head of set-bolt of set-screw deformed by welding

Sketch No. 2
Sheeted vehicles with sliding rings



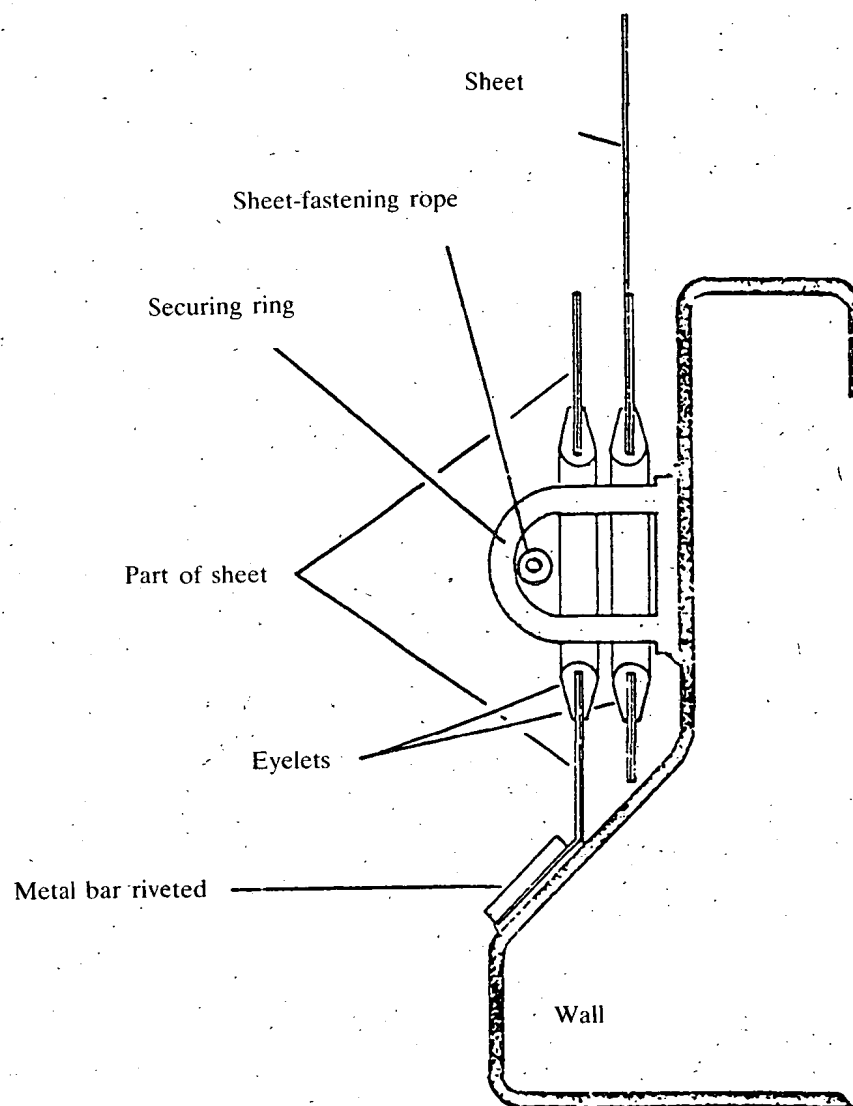
Bar attachment points

Sketch No. 2a.
Example of a swivel ring ("D" ring)



Sketch No. 3
Example of a device for fastening vehicle sheets

The device illustrated below meets the requirements of the last part of paragraph 11 of annex 2, article 3. It also meets the requirements of annex 2, article 3, paragraph 6.



Sketch No. 4
Device for fastening sheets

The device illustrated below meets the requirements of annex 2, article 3, subparagraph 6 (a).

